

CARAVANAS ABRIL-26

MARCA	ABRIL	%
Adria	31	18.7%
Knaus	20	12.0%
Sterckeman	20	12.0%
Weinsberg	18	10.8%
Fendt	16	9.6%
Hobby	14	8.4%
Dethleffs	13	7.8%
Caravelair	12	7.2%
Across	7	4.2%
Bürstner	2	1.2%
Chicharra	2	1.2%
Eriba	2	1.2%
La Mancelle	2	1.2%
Tabbert	2	1.2%
Elddis	1	0.6%
Fleetwood	1	0.6%
Gruau	1	0.6%
LMC	1	0.6%
Roller	1	0.6%
TOTAL	166	100%

AUTOCARAVANAS ABRIL-26

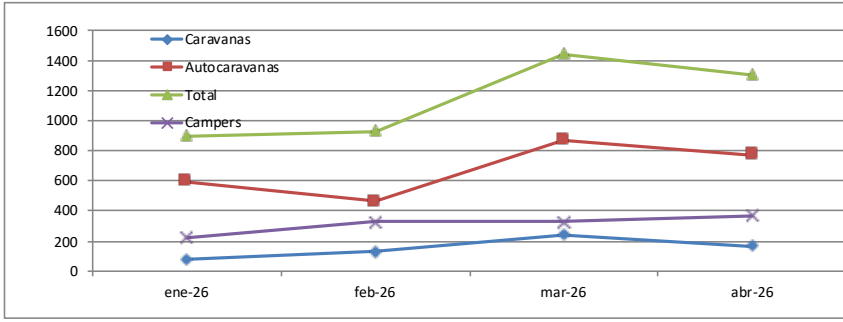
MARCA	ABRIL	%
Benimar	97	12.6%
McLouis	91	11.8%
Challenger	50	6.5%
Roller Team	42	5.4%
Hymer	38	4.9%
Rimor	38	4.9%
Adria	37	4.8%
Bürstner	37	4.8%
Carado	36	4.7%
Chausson	30	3.9%
Pilote	30	3.9%
Rapido	29	3.8%
Giottiline	24	3.1%
CI	20	2.6%
Dethleffs	20	2.6%
Elnagh	20	2.6%
Mobilvetta	18	2.3%
Itineo	16	2.1%
Fiat	13	1.7%
Knaus	10	1.3%
AutoStar	7	0.9%
Bavaria	7	0.9%
Carthago	6	0.8%
Eura Mobil	6	0.8%
Laika	6	0.8%
Citroën	4	0.5%
Etrusco	4	0.5%
Joint	3	0.4%
LMC	3	0.4%
Sun Living	3	0.4%
Weinsberg	3	0.4%
Fleurette	2	0.3%
Ford	2	0.3%
Ilusion	2	0.3%
Niesmann	2	0.3%
Blucamp	1	0.1%
Concorde	1	0.1%
Esterel	1	0.1%
Fendt	1	0.1%
Frankia	1	0.1%
Le Voyageur	1	0.1%
Mercedes	1	0.1%
Moncayo	1	0.1%
Mooveo	1	0.1%
Peugeot	1	0.1%
Pla	1	0.1%
Sea	1	0.1%
TEC	1	0.1%
Wingamm	1	0.1%
XGO	1	0.1%
TOTAL	771	100%

CAMPERS ABRIL-26

MARCA	ABRIL	%
VW	104	28.3%
Benimar	35	9.5%
McLouis	34	9.3%
Adria	27	7.4%
Giottivan	21	5.7%
Weinsberg	16	4.4%
Carado	15	4.1%
Pössl	14	3.8%
Challenger	13	3.5%
Knaus	13	3.5%
Rimor	9	2.5%
Clever	6	1.6%
Roller Team	6	1.6%
Elnagh	5	1.4%
CI	4	1.1%
Dethleffs	4	1.1%
Panama	4	1.1%
Sun Living	4	1.1%
Westfalia	4	1.1%
Etrusco	3	0.8%
Randger	3	0.8%
Bravia	2	0.5%
Dreamer	2	0.5%
Hymer	2	0.5%
Joa Camp	2	0.5%
Mercedes	2	0.5%
Bavaria	1	0.3%
Bürstner	1	0.3%
Crosscamp	1	0.3%
Dream	1	0.3%
Font Vendôme	1	0.3%
Hobby	1	0.3%
Karmann	1	0.3%
La Strada	1	0.3%
Laika	1	0.3%
Malibu	1	0.3%
Mooveo	1	0.3%
North Cape	1	0.3%
Pilote	1	0.3%
TOTAL	367	100%

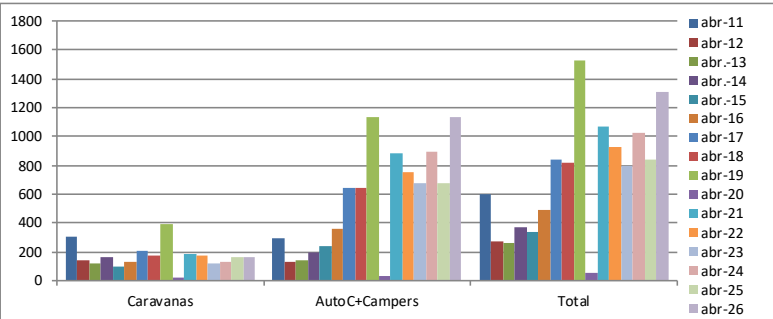
EVOLUCION MES A MES

	ene-26	feb-26	mar-26	abr-26	% mar-abr
Caravanas	79	132	240	166	-31%
Autocaravanas	595	466	869	771	-11%
Campers	222	330	331	367	11%
Total	896	928	1440	1304	-9%



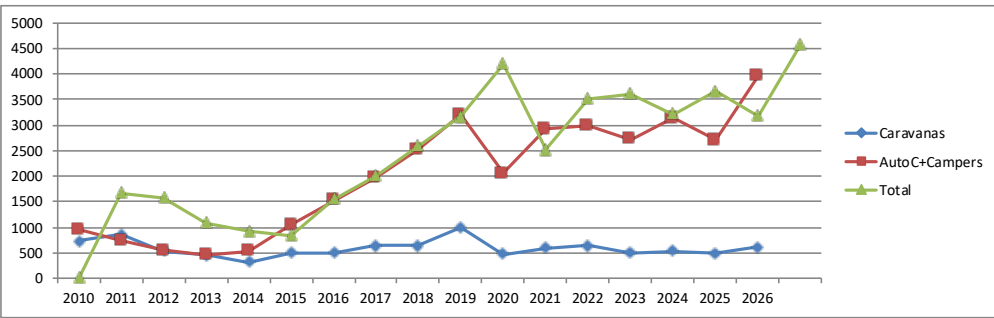
COMPARACION AÑOS ANTERIORES

	abr-11	abr-12	abr-13	abr-14	abr-15	abr-16	abr-17	abr-18	abr-19	abr-20	abr-21	abr-22	abr-23	abr-24	abr-25	abr-26	Δ abr 23/24
Caravanas	300	143	117	167	95	129	203	174	392	19	186	170	121	134	165	166	1%
AutoC+Campers	295	130	141	199	239	360	638	640	1138	33	878	751	673	892	678	1138	68%
Total	595	273	258	366	334	489	841	814	1530	52	1064	921	794	1026	843	1304	55%



COMPARACION ACUMULADO ENERO-ABRIL

	2010	2011	2012	2013	2014	2015	2016	2017	2018	2019	2020	2021	2022	2023	2024	2025	2026	Δ 25/26
Caravanas	725	856	536	458	307	500	494	638	639	995	467	594	640	498	528	480	615	28%
AutoC+Campers	947	725	546	454	531	1044	1516	1959	2526	3203	2058	2928	2980	2720	3133	2707	3949	46%
Total	1672	1581	1082	912	838	1544	2010	2597	3165	4198	2525	3522	3620	3218	3661	3187	4564	43%



MATRICULACIONES POR TIPO

	abr-26	%
Caravanas	166	13%
Autocaravanas	771	59%
Campers	367	28%

